



Scale = 1 : 2M Longitude: -69.92292 Latitude: 41.52629

DCR Facilities

Instructions on moving around the map, plus more information about this project, are at the [bottom of the page](#).

Click on a DCR facility entry point to view information about that facility (you must zoom in close first to where the point features are visible), or choose a facility from the list:

Choose a DCR facility:

Choose a pool from the list to zoom to it and view its attributes:

Choose a DCR pool:

Choose a rink from the list to zoom to it and view its attributes:

Choose a DCR rink:

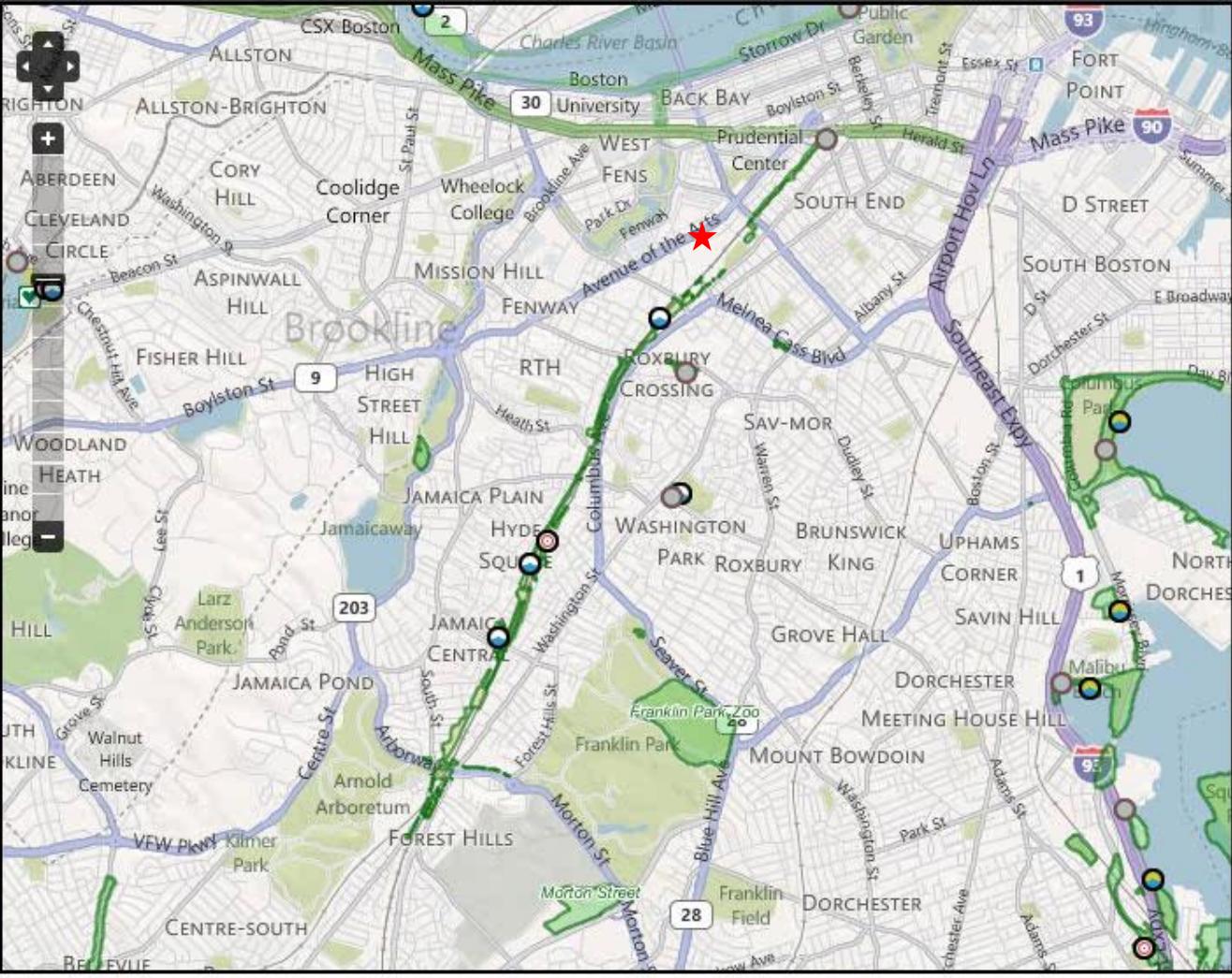
Choose Basemap:

Bing Road

Toggle MassGIS map layers:
Note: some layers will not appear at certain zoom levels.

- DCR Points
 - DCR Facility Entry Points
 - DCR Beaches
 - DCR Healthy Heart Trail Start Points
 - DCR Swimming Pools
 - DCR Skating Rinks
- Public Roads
- Trains
- Water Features
- DCR Facilities
 - DCR Boundaries

DCR Facility Attributes
DCR Beach Attributes



DCR Facilities

Instructions on moving around the map, plus more information about this project, are at the [bottom of the page](#).

Click on a DCR facility entry point to view information about that facility (you must zoom in close first to where the point features are visible), or choose a facility from the list:

Choose a DCR facility:
[Google Map it!](#)

Choose a pool from the list to zoom to it and view its attributes:
 Choose a DCR pool:

Choose a rink from the list to zoom to it and view its attributes:
 Choose a DCR rink:

Choose Basemap:
 Bing Road

Toggle MassGIS map layers:
 Note: some layers will not appear at certain zoom levels.

- DCR Points
 - DCR Facility Entry Points
 - DCR Beaches
 - DCR Healthy Heart Trail Start Points
 - DCR Swimming Pools
 - DCR Skating Rinks
- Public Roads
- Trains
- Water Features
- DCR Facilities
 - DCR Boundaries

Scale = 1 : 68K Longitude: -69.90095 Latitude: 42.24197

DCR Facility Attributes

Facility name: **Southwest Corridor Park**

Done



Scale = 1 : 68K Longitude: -69.90095 Latitude: 42.24197

DCR Facility Attributes

Facility name:	Southwest Corridor Park
(Location quality):	Needs Review
Point location:	Park Entrance (one of many)
Travel mode:	Foot
Notes:	
Webpage:	http://www.mass.gov/dcr/parks/metroboston/southwestCorr.htm
Phone:	617-727-0057
Primary town:	Back Bay to Forest Hills
Walking or hiking trails:	Yes
Running paths:	No
Picnic facilities:	No
Historical features:	No
Horseback riding allowed:	No
Biking trails:	Yes
Mountain biking allowed in season:	No [DETAILS]
Fishing allowed (with license):	No [DETAILS]
Golfing:	No
Rock climbing:	No
Cross-country skiing:	No
Downhill skiing:	No
Reservable day-use area for groups:	No
Canoeing and/or kayaking:	No
Sailing programs:	No
Non-motorized boating allowed:	No
Motorized boating allowed (registration required):	No [DETAILS]
Snowmobiling allowed in season:	No [DETAILS]
All-terrain-vehicle OHVs allowed in season:	No [DETAILS]
Motorcycle OHVs allowed in season:	No [DETAILS]
Hunting allowed in season:	No [DETAILS]
Swimming beach:	No
Swimming pool:	No
Spray deck:	Yes
Wading pool:	No
Skating rink:	Yes
Restrooms:	No

Done

- Public Roads
- Trains
- Water Features
- DCR Facilities
 - DCR Boundaries
 - DCR Property
 - DCR Other Interests
- MA Towns

Web Services and Geographic Data from:



Base maps from [Bing Maps](#), [Google Maps](#), [OpenStreetMap](#), [TopOSM](#), and [CloudMade](#).



DCR Facilities

Instructions on moving around the map, plus more information about this project, are at the [bottom of the page](#).

Click on a DCR facility entry point to view information about that facility (you must zoom in close first to where the point features are visible), or choose a facility from the list:

Choose a DCR facility: [dropdown menu]
No coordinates available

Choose a pool from the list to zoom to it and view its attributes:

Choose a DCR pool: [dropdown menu]

Choose a rink from the list to zoom to it and view its attributes:

Choose a DCR rink: [dropdown menu]

Choose Basemap: [dropdown menu]
Bing AerialWithLabels

Toggle MassGIS map layers:
Note: some layers will not appear at certain zoom levels.

- DCR Points
 - DCR Facility Entry Points
 - DCR Beaches
 - DCR Healthy Heart Trail Start Points
 - DCR Swimming Pools
 - DCR Skating Rinks
- Public Roads
- Trains
- Water Features
- DCR Facilities
 - DCR Boundaries

Scale = 1 : 2133 Longitude: -71.08885 Latitude: 42.32141

No DCR Facility chosen
No DCR Beach chosen



Scale = 1 : 2133 Longitude: -71.08886 Latitude: 42.32119

No DCR Facility chosen

No DCR Beach chosen

No DCR Healthy Heart Trail chosen

DCR Pool Attributes

Abbreviated pool name:	Cass Pool
Official pool name:	Melnea A. Cass Swimming Pool
Type of pool:	Swimming Pool
Status for current or upcoming season:	Open
Lifeguard staffing:	Yes
Address:	Martin Luther King Boulevard and Washington Street
Town:	Boston
Phone:	617-445-0062
Legislation designating official pool name:	Acts 1967, Chapter 856
Accessible restroom:	No
Accessible route to the water:	No
Accessible pool lift:	No
Accessible secondary means of access (ramp and/or pool stair):	No

No DCR Rink chosen

Choose a link from the list to zoom to it and view its attributes:

Choose a DCR rink:

Choose Basemap:

Bing AerialWithLabels

Toggle MassGIS map layers:
Note: some layers will not appear at certain zoom levels.

- DCR Points
 - DCR Facility Entry Points
 - DCR Beaches
 - DCR Healthy Heart Trail Start Points
 - DCR Swimming Pools
 - DCR Skating Rinks
- Public Roads
- Trains
- Water Features
- DCR Facilities
 - DCR Boundaries
 - DCR Property
 - DCR Other Interests
- MA Towns

Web Services and Geographic Data from:



Base maps from
[Bing Maps](#), [Google Maps](#),
[OpenStreetMap](#), [TopOSM](#),
and [CloudMade](#).

The Get Outdoors Massachusetts Mobile App Contest





The Get Outdoors Massachusetts Mobile Apps Contest is on!
 Compete for once-in-a-lifetime prizes by developing apps that feature outdoor recreation hot spots in Massachusetts. Help outdoor enthusiasts use their smart phone find out where to fish, skate, ski, boat, swim, hike, pick apples, watch wildlife, and much more. We're accepting submissions from Dec. 19, 2011 through February 24, 2012. The winners are announced on March 20, 2011. See contest rules for details.

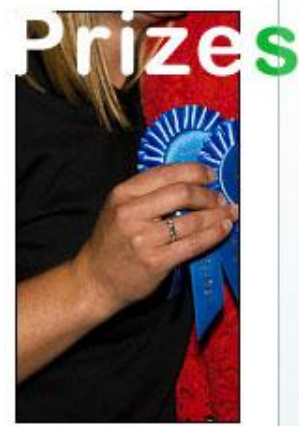
Official Rules

The Get Outdoors Massachusetts contest is open to the public and seeks public participation in developing technologies that feature Massachusetts outdoor and natural resources. The goal of the competition is to provide software developers with data to create a mobile application for the public to use a smart phone to map to public lands, access points and other outdoor venues for outdoor recreation.

The Data

This page contains helpful technical information for developers who enter the Executive Office of Energy and Environmental Affairs (EOEEA) Mobile App Contest.

Frequently Asked Questions



- Win a chance to join biologists on a bald eagle tagging expedition or a black bear research trip!
 - Spend the weekend at farm bed and breakfast and enjoy a tour and local food!
 - Take a few friends for a week-long camping trip on the beach!
 - Have your winning apps featured on our website and in our awards media event in March.
- IMPORTANT DATES**
- December 19, 2011 – contest opens
 - February 24, 2012 – submission deadline
 - March 20, 2012 – winners announced

-
- whats new
- getting started
- wms home
- wms sld home
- geocoding home
- wfs home
- wfs examples
- simple clients
- web clients home
- advanced topics
- The Get Outdoors Massachusetts Mobile App Contest**



The Get Outdoors Massachusetts Mobile App Contest

Edit Add Tools

Added by David Kimball, last edited by David Kimball on Jan 06, 2012 (view change)

Hello developers! This series of wiki pages contains helpful technical information for developers who enter the Executive Office of Energy and Environmental Affairs (EEA) Mobile App Contest.

EEA agencies, including the Department of Conservation and Recreation (DCR), the Department of Fish and Game (DFG), and the Department of Agricultural Resources (DAR), are making a variety of recreation data available via MassGIS' Geospatial Web Services. Details on how to access and use the data will appear on this page.

Data will be stored at MassGIS and served via Web Mapping Service (WMS) and Web Feature Service (WFS) requests. MassGIS has lots of examples of requests (WMS, WFS) on this wiki. We will post additional EEA-data-specific examples here as well.

Details about the recreation data are available here: [EEA Public Recreation Data](#)

Details about the contest are available here: <http://www.mass.gov/eea/mobileappcontest/>

[Add Labels](#)

Child Pages (1) [Show Child Pages](#) | [Reorder Pages](#) | [Add Child Page](#)

[Add Comment](#)

- Search
- whats new
 - getting started
 - wms home
 - wms sld home
 - geocoding home
 - wfs home
 - wfs examples
 - simple clients
 - web clients home
 - advanced topics
 - The Get Outdoors Massachusetts Mobile App Contest
 - EEA Public Recreation Data



EEA Public Recreation Data

Edit Add Tools

Added by David Kimball, last edited by David Kimball on Jan 06, 2012 (view change)

MassGIS is hosting public recreation data released by EEA subagencies (DCR, DFG, DAR). The data can be used by mobile apps, mashups, etc. The data, which includes both geographic and tabular data, is served live by MassGIS' Geospatial Web Services infrastructure, including GeoServer.

Here is each agency's wiki page describing the data they are releasing:

- [Department of Conservation and Recreation \(DCR\) public recreation data](#)
- [Department of Fish and Game \(DFG\) public recreation data](#)
- [Department of Agricultural Resources \(DAR\) public recreation data](#)

[Add Labels](#)

Child Pages (3) [Show Child Pages](#) | [Reorder Pages](#) | [Add Child Page](#)

[Add Comment](#)

- [-] wfs examples
- [-] simple clients
- [-] web clients home
- [-] advanced topics
- [-] The Get Outdoors Massachusetts Mobile App Contest
- [-] EEA Public Recreation Data
 - DAR data
 - [-] **DCR data**
 - DCR WFS Examples
 - DCR WMS Examples
 - DCR FAMIS Codes
 - [-] DCR Facilities
 - DCR Facility Entry Points
 - DCR Facility Table
 - DCR Beach Points
 - DCR Healthy Heart Trail Start Points
 - [-] DCR Swimming Pools Plus
 - DCR Pools Table
 - [-] DCR Skating Rinks Plus
 - DCR Rinks Table
 - DCR Openspace
 - DFG data



DCR data

Edit Add Tools

Added by David Kimball, last edited by David Kimball on Jan 06, 2012 (view change)

NOTE: this data is under development. We will have a set data structure (list of datasets and tables, their field/column structure, and what type of data values go in the columns) by the time [The Get Outdoors Massachusetts Mobile App Contest](#) launches. However, we will continue to edit the data values (and add and delete records and edit geographic locations and shapes) on an ongoing basis. The idea is that any applications that use the data will either load the data live in real-time from the data source (MassGIS) or frequently update any data stored by the application. Apps should be flexible enough to gracefully handle changing data. We will make every effort not to change the database structure without informing any developers who sign up on EEA's app developer list (on the [contest web site](#)). It is fairly likely that new fields will be added to tables and datalayers over time - these shouldn't break any apps.

DCR is releasing several datasets that should help people get out and enjoy the many recreational activities available in our parks. Clicking the links below will take you to detailed descriptions of each table or geographic datalayer.

Warning: It is important to realize that these datasets are fairly static and are not constantly updated with time-of-day, seasonal, and emergency closures. Please refer to the [DCR website](#) for up-to-date information.

The [DCR WFS Examples](#) page contains a number of sample URL queries that demonstrate how to get DCR recreation data from MassGIS webservice. The [DCR WMS Examples](#) page contains a few examples of how to get DCR recreation data map images from MassGIS webservice.

- Search
- whats new
 - getting started
 - wms home
 - wms sld home
 - geocoding home
 - wfs home
 - wfs examples
 - simple clients
 - web clients home
 - advanced topics
 - The Get Outdoors Massachusetts Mobile App Contest
 - EEA Public Recreation Data
 - DAR data
 - DCR data
 - DCR WFS Examples
 - DCR WMS Examples
 - DCR FAMIS Codes
 - DCR Facilities
 - DCR Beach Points
 - DCR Healthy Heart Trail Start Points
 - DCR Swimming Pools Plus

GetFeature (WFS)

You can get the features (database rows, and geographic shape if applicable) from a table or geographic datalayer using the WFS GetFeature request. Here are some examples that return ALL the features from the DCR recreation tables and datalayers:

- Get all DCR Facility points: http://giswebservices.massgis.state.ma.us/geoserver/wfs?request=getfeature&version=1.0.0&service=wfs&typename=massgis:DCR.DCR_FACILITIES
- Get all DCR Facility Table records: http://giswebservices.massgis.state.ma.us/geoserver/wfs?request=getfeature&version=1.0.0&service=wfs&typename=massgis:DCR.FACILITY_TABLE
- Get all DCR Beach points: http://giswebservices.massgis.state.ma.us/geoserver/wfs?request=getfeature&version=1.0.0&service=wfs&typename=massgis:DCR.BEACH_POINTS
- Get all DCR Healthy Heart Trail start points: http://giswebservices.massgis.state.ma.us/geoserver/wfs?request=getfeature&version=1.0.0&service=wfs&typename=massgis:DCR.HHT_START_POINTS
- Get all DCR Pools Plus points: http://giswebservices.massgis.state.ma.us/geoserver/wfs?request=getfeature&version=1.0.0&service=wfs&typename=massgis:GISDATA.DCR_POOLS_PLUS
- Get all DCR Rinks Plus points: http://giswebservices.massgis.state.ma.us/geoserver/wfs?request=getfeature&version=1.0.0&service=wfs&typename=massgis:GISDATA.DCR_RINKS_PLUS
- Get all DCR Openspace: http://giswebservices.massgis.state.ma.us/geoserver/wfs?request=getfeature&version=1.0.0&service=wfs&typename=massgis:GISDATA.OPENSOURCE_POLY_SV_DCR (this link has been disabled by putting a space after the "http" because it would return an enormous amount of data, more than 6000 complex polygon features with extensive attributes. We recommend using a focused filter to get specific portions of this datalayer)
 - Get all DCR Openspace named Boston Harbor Islands State Park, returning just 5 attribute fields (including SHAPE): http://giswebservices.massgis.state.ma.us/geoserver/wfs?request=getfeature&version=1.0.0&service=wfs&typename=massgis:GISDATA.OPENSOURCE_POLY_SV_DCR

This XML file does not appear to have any style information associated with it. The document tree is shown below.


```

- <wfs:FeatureCollection xsi:schemaLocation="http://massgis.state.ma.us/featuretype http://giswebservices.massgis.state.ma.us/geoserver
/wfs?service=WFS&version=1.0.0&request=DescribeFeatureType&typeName=massgis%3ADCR.BEACH_POINTS http://www.opengis.net/wfs
http://giswebservices.massgis.state.ma.us/geoserver/schemas/wfs/1.0.0/WFS-basic.xsd">
- <gml:boundedBy>
- <gml:Box srsName="http://www.opengis.net/gml/srs/epsg.xml#26986">
- <gml:coordinates decimal="." cs="," ts=" ">
52210.3584999964,789205.297800001 322605.598200001,954816.542300001
</gml:coordinates>
</gml:Box>
</gml:boundedBy>
- <gml:featureMember>
- <massgis:DCR.BEACH_POINTS fid="DCR.BEACH_POINTS.31">
- <gml:boundedBy>
- <gml:Box srsName="http://www.opengis.net/gml/srs/epsg.xml#26986">
- <gml:coordinates decimal="." cs="," ts=" ">
152582.2025000006,930798.2347000019 152582.2025000006,930798.2347000019
</gml:coordinates>
</gml:Box>
</gml:boundedBy>
<massgis:LABEL>Beamans Pond Camp Beach</massgis:LABEL>
<massgis:TYPE>Freshwater</massgis:TYPE>
<massgis:STATUS>Open</massgis:STATUS>
<massgis:LIFEGUARD>No</massgis:LIFEGUARD>
<massgis:FEES>Parking $5</massgis:FEES>
<massgis:ADDRESS>86 Winchendon Rd</massgis:ADDRESS>
<massgis:TOWN>Baldwinville</massgis:TOWN>
<massgis:PHONE>978-939-8962</massgis:PHONE>
<massgis:FAMIS_CODE>OTTR</massgis:FAMIS_CODE>

```

- Search
- whats new
 - getting started
 - wms home
 - wms sld home
 - geocoding home
 - wfs home
 - wfs examples
 - simple clients
 - web clients home
 - advanced topics
 - The Get Outdoors Massachusetts Mobile App Contest
 - EEA Public Recreation Data
 - DAR data
 - DCR data
 - DCR WFS Examples
 - DCR WMS Examples
 - DCR FAMIS Codes
 - DCR Facilities
 - DCR Beach Points
 - DCR Healthy Heart Trail Start Points
 - DCR Swimming Pools Plus

attribute column that notes their presence within the facility (i.e. `SWIMMING_BEACH`).

 Inclusion on this list does not indicate whether the park is open. Some parks are only open seasonally, most parks are only open certain hours of the day, and parks can be closed for various reasons at any time. Always check the park's web page (stored in the "WEBPAGE" field) for closure information.

Here are the fields (columns) in the datalayer's attribute table (the fields are not guaranteed to appear in this order):

The first group of fields come from [DCR Facility Entry Points](#). They mainly contain information about the geographic point.

- [FAMIS_CODE](#) - 4-letter facility code (used for joining).
- [LOCATION](#) - text description of what the point represents, i.e. "Parking Lot Entrance"
- [PT_STATUS](#) - *Good/Needs Review/Needs Fixing* - status of the point's geographic quality
- [MODE_](#) - *Car/Foot* - how the visitor should arrive at the point. Some parks don't have parking so the visitor would arrive by foot (or public transit or bike). For some reason SDE adds an underscore to the end of this field name.
- [LONGITUDE](#) - decimal degrees; the numbers are negative, indicating West longitude
- [LATITUDE](#) - decimal degrees; the numbers are positive, indicating North latitude
- [SHAPE](#) - where the database stores geographic information - ignore this.

The remaining fields come from [DCR Facility Table](#). The next group of fields contains basic facility information.

- [FACILITY](#) - the most commonly-used name of the facility (matches with Openspace, omitting apostrophes, in either `SITE_NAME` or `ALTERNATE_SITE_NAME`)
- [NOTES](#) - comments, mostly about naming and FAMIS code issues
- [WEBPAGE](#) - DCR's webpage for the facility, or the main DCR webpage if there's no park page. Occasionally the link will be to an outside website operated by an agency partner or co-manager.
- [PHONE](#) - contact phone number for the park. or district office or manager if there's no park number. In